

DIRECTOR  
**Natalie**  
gnattrlr@gmail.com

TREASURER  
**Lynn**  
lynnmtrlr@comcast.net

MEMBERSHIP,  
ROAD CAPTAIN  
**Dawn**  
dmhtrlr@comcast.net

NEWSLETTER EDITOR,  
SECRETARY  
**Sue**  
suespittle@comcast.net

PA STATE AMBASSADOR  
**Dawn "Paws"**  
mountaingrrl@mac.com



Nov. 2020

SOUTH CENTRAL PA CHAPTER NEWS

Vol. 25 No. 11

[www.twinroseladyriders.com](http://www.twinroseladyriders.com)

[www.meetup.com/Twin-Rose-Lady-Riders](http://www.meetup.com/Twin-Rose-Lady-Riders)

**WOW: Twin Rose Lady Riders Chapter**

## Greetings Roses and Friends!

As always, I hope you are happy and healthy!

It seems like it was just 95 and the sun shone until 8pm. Now that the days are a little short to ride, I've begun cleaning out closets. What a project. I know the end result is worth the work, but goodness. We all know this is a good metaphor for life. Even riding. There are challenging roads and conditions and, in the end, we build confidence and ability — well worth the work.

I have been enjoying going through old photos. I even found my Mom's high school and nursing school yearbooks. She always accused me of being a pack-rat...but... One of the most precious things I found was her cape from nursing school. I don't know why it surprised me. I still have my varsity jacket from high school.

So many things seem different now from even a year ago, but it's nice that some things stay the same. Holiday traditions, for example. Like most families, our food seems to be consistent over the years — turkey and stuffing. About 10 years ago, green bean casserole was added. Recently corn pudding made the list. My brother was stationed down south for 6 years and was not only familiar with it, but loved it! Thanks, Elaine for the recipe!

Speaking of things changing, we will continue to monitor the pandemic and adjust our meetings and activities appropriately. Nancy has a full Zoom account that she has graciously allowed us to use. This way we won't be limited to 40 minutes for our monthly meetings. The anniversary party will have to be canceled, since there is no way to socially distance ourselves. Hopefully we can ride unrestricted in 2021.

The ride committee will soon begin meeting again. My goal for our schedule is to go new places. So please, please, please forward information to me or any member of the committee. We always try to vary the length of the rides from month to month. That way we satisfy both day trippers and ice cream riders. There is talk of a camping weekend for the Roses too! I think roasting s'mores with you ladies would be a great evening!

Stay safe Roses and friends! Hope to see you (at least virtually) soon!

*Natalie*

## Happy Birthday

Terri.....December 26  
John S.....December 27  
Dan.....January 13  
Dawn H.....January 18

Roses, if your birthday has been missed  
send it (mo/day) to [suespittle@comcast.net](mailto:suespittle@comcast.net)

### Meets 2nd Sundays:

**NOV – MAR: 10:30 AM** brunch

**APR – OCT:** Check ride  
calendar or call for details  
on meeting sites or specific  
ride/rendezvous plans.

### Welcome Prospective Members!

Would you like to ride with an enthusiastic local WOW chapter? Call any of the names above to chat, or check our web site and events calendar and drop by a meeting point. Support Guys always welcome, too!

If you'd like to continue receiving chapter news, forward \$10 (check payable to Twin Rose Lady Riders) to the Treasurer's address above. It's an annual donation toward operating expenses.

### Membership Policy:

Women On Wheels® members and guests are welcome to participate with any chapter. We encourage you to **join the nat'l organization, as WOW membership is required for continued chapter participation** and because members are protected under our insurance plan. Application forms are available in the WOW magazine or from any chapter officer.

# TRLR Zoom Meeting Minutes

Nov. 22, 2020

Nancy set up the link for us to “brunch” on our own while Zooming with fellow Roses. Once everyone logged in, Nat called the meeting to order at 10:40.

Attendance: **Nat, Dawn H, NanC (with Jon and cat), Sue S, Kathy R, Trish (with antlers), Paws, Crystal**

Lynn was not present but Nat stated that our Treasury remains “status quo”

Lynn will invoice newsletter advertisers late Dec/early Jan. Nat encourages everyone to sell ads since our “dues/don’ts” barely cover our minimal expenses (web, WOW fees, postage, etc).

Kathy R will be placing an ad.

It was decided that we keep chapter “don’ts” at \$10/yr because required WOW membership is \$50/yr and \$60 total might be deterring riders from joining.

Nat encouraged us to log onto WOW’s website to vote on how you see the national org moving in the future.

## Rides:

Nat wants to know what sort of rides/destinations the chapter wants for 2021. Long/short/mix?

Paws requested rides heading north so that she, Crystal, and Sigi do not have quite so far to go to join up. Many northerly routes were discussed. Ride Committee will take that into account.

Elaine has suggested a camping weekend. It was decided that she should pick a weekend. There is interest as long as cabins, yurts, campers are available. Few want to sleep in tents. Hickory Run in the Poconos was preferred.

## Ride For HOPE recap and 2021 thoughts:

Paws said she would volunteer as Event Chair again.

Tentative Date Sunday, Sept. 12, 2021  
(Dawn H and Nat will lock it in at Dec. Dist 6 meeting)

Stick with Smokehouse Food Truck so we do not have to mess with food, plus they donate a percentage to the cause.

Try to keep the event outside.

Think about how we can attract more riders. Watch for free newspaper/TV coverage; Kathy R says Armstrong Cable has a TV show featuring local businesses, and we might suggest they interview Barb T. She can talk about HOPE and hype our upcoming event.

Event location discussed. Have it again at York MC if the date is acceptable to them – must ask Steve (outside with option of going in if weather bad); or Kathy R will ask 1<sup>st</sup> Capital H-D if we could use their parking lot (canopies only; no option of indoor shelter).

In advertising maybe feature photos of actual families HOPE has served (no names, just faces/stories) to make the charity more real.

Events that draw huge crowds are led; we cannot have a led ride.

## HOPE Banquet, May 6, 2021:

\$80; 8/person table \$560; unsure how many Roses will attend

## HOPE Brick:

Voted to buy 8” x 8” size for \$250

Text open for discussion; Sue S suggested simply:

WITH LOVE  
TWIN ROSE LADY RIDERS

## Nominations for Chapter Board officially opened.

Director: Nat accepted

Treasurer: Lynn accepted

[See ballot in this issue]

## Chapter Anniversary Party:

Voted to cancel due to the pandemic. NanC will contact Loxley’s and reserve Jan. 8, 2022.

Paws suggested still having a Secret Santa

Kathy R suggested just taking donations toward the HOPE brick

NanC volunteered to set up/coordinate a Secret Sister list so those interested can exchange secret gifts/cards all year. All agreed.

## Other Business:

Nat will remind Franklin Bronze Plaques to make the Ride for HOPE Club Challenge dangly thingie for Red Rose Riders. Several Roses will present it to them at their party Sat., Jan 16

NanC will put together instructions to mail 2021 “don’ts” to Lynn or pay via PayPal. A brick donation can be made at the same time.

Unanimous vote to stick with Zoom for Dec 13 meeting. Watch for link.

Kathy R moved to adjourn at 11:50.

— Sue S, Secretary

## Lynn asks, “Where am I?”



Lynn is quick with the camera on her Spyder! Where did she spot this cool sculpture?

ANSWER CAN BE FOUND SOMEWHERE IN THIS ISSUE.



## Election Time Is Here!!

*Women On Wheels® requires the following:*

- A Chapter Officer, regardless of the title, must be a member in 'good standing' with WOW membership dues paid.
- Sorry support guys – you may not run for office – but that does not stop you from being drafted... oh, I mean volunteered... for any and all support needed at any time day or night! :-)

### *Twin Rose Lady Riders*

*South Central PA Chapter of Women On Wheels®*

### *Election Ballot*

for the Term of Jan. 2021 – Dec. 2022

**Vote no later than Dec. 20:**

**By email: [suespittle@comcast.net](mailto:suespittle@comcast.net) (DO NOT Reply All)**

**OR mail ballot to: Sue Spittle, 1729 Ridgewood Rd, York, PA 17406**

#### **PRESIDENT:**

☐ NATALIE WINEGARDEN

☐ \_\_\_\_\_

(write-in candidate)

#### **TREASURER:**

☐ LYNN MARTIN

☐ \_\_\_\_\_

(write-in candidate)

#### **SECRETARY:**

\_\_\_\_\_  
(Sue S has volunteered to continue on, but if you have a craving for the job — write-in yourself)

Election results will be announced in January.

### Advertise Here

1/8 pg. (3.5" w x 2" h - bus. card size) .....\$20/yr

1/4 pg. (3.5" w x 4" h) .....\$35/yr

1/2 pg. (8" w x 4" h) .....\$65/yr

*For more info ontact:*

Sue, Editor at [suespittle@comcast.net](mailto:suespittle@comcast.net)

Distributed to members and club supporters; posted online for the general public. Will link PDF to a website if requested.

Advertisers coming on board mid-year will be charged a pro-rated amount for the balance of their first year, then the annual rate the next January when they renew.

Classified ads are free for members.  
Non-members – \$5/mo. or \$10/3 mo.

#### **ATTN ROSES:**

We keep chapter operating costs low but depend on sponsor newsletter ad sales. **Please help to sell ads.**

### *Beginning Jewelry Making* CLASSES IN YORK

**Come learn and have fun!**

**\$150 per 8-week class**

*(includes \$50 in materials to use and keep)*

**\$75 deposit due before class**  
to order materials and hold your spot

**1 hour per week**

~ Classes forming all the time ~



*For more info or to register*

Call or Text: 717-719-9362

Email:

[jennifersbusiness@gmail.com](mailto:jennifersbusiness@gmail.com)

**Custom work also available**



# Nat's Bucket List Ride

✓Check ✓Check ✓Check

July 31, 2020

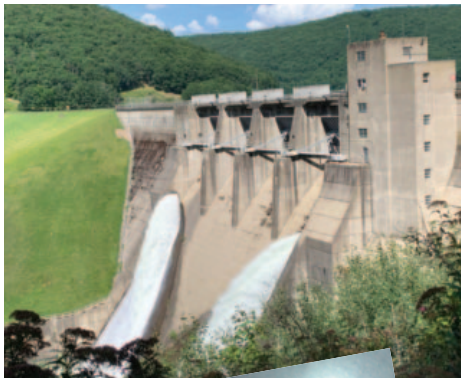
One of my requirements for vacation this year is to go places I haven't been before. It feels like time away from home is even more precious than it has ever been, and is not to be squandered.

Our original plan was to go see the Mothman statue in Point Pleasant, WV. Unfortunately, the weather was not cooperating. We have all been riding long enough to not really want to travel in the rain anymore. We are more than willing to do so if we have to, but really, what's the point?

After consulting the weather maps, it seems like Northeast was the only way to go. So I pulled out my bucket list and we had a plan!

For years, I have seen Denny's Beer Barrel on the Food Network and Travel Channel. I knew I couldn't compete for their challenges, but I wanted to check it out! We left Thursday afternoon, and arrived at the restaurant at dinner time. This was the first restaurant I have been in that recorded our contact information for COVID-19 tracing. Not only were the burger and fries delicious, my one friend ordered the cheeseburger soup—which was also amazing! Who knew that a place known for burgers, would have such an extensive interesting menu!

Friday morning, our next adventure was to Benezette—Elk Capital of Pennsylvania. Well... I guess so? We didn't see one elk! I'm pretty sure that I am a wildlife repellent. Skyline Drive, no bear; Benzette, no elk, etc. But it was nice to check out the visitors center. And the roads around there are beautiful. Since Bullwinkle didn't want to come out to play, we checked out the Kinzua Skywalk. Although I have been there, I had never visited the Kinzua Dam! Fascinating that it was filled by Hurricane Agnus, and it actually cost less to build than the damage that would have been done without it!



the things I love while on vacation. So serendipitous. Unfortunately, Erie is quite a tourist spot, and the only reasonable places to sleep were near the Casino. None of us are what I would call worry-warts, but I didn't think parking four motorcycles outside across from the casino was the smartest

We went north to Erie and enjoyed a little time at Presque Isle State Park. It was getting late, so we began thinking about finding a place to stay. While we researching, a Paddle Steam boat went motoring by. These are

thing to do. When I did the route 6 ride a few years ago, I stayed in Meadville. We were able to find a reasonable room. Oh—did I happen to mention that there is a Tim Horton's in Meadville. What a coincidence.

Before bed we checked the forecast and discovered there was rain coming in the next afternoon. So we decided to cut our trip short to avoid getting wet. And really, we fit a lot of bucket list items into one day!



But—there was one more stop the next morning. Dubois Harley-Davidson. This is one of the coolest dealerships I have seen. It is an old building and when you walk in, it looks like a Main Street.

I returned home 48 hours after I left, rode 778 miles and crossed quite a few items off of my bucket list.

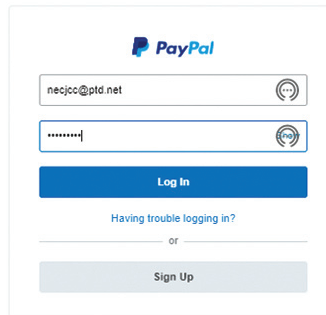
Here's to more adventures to come.

# How to pay your 2021 TWIN ROSE LADY RIDERS Chapter "DON'TS" (dues)

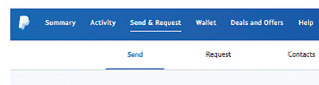
Instructions courtesy of NanC

**How to send funds using PayPal** You can pay your club fees and make a donation to the Brick Fund using PayPal in a few easy steps.

1. Log into your PayPal account at [www.PayPal.com](http://www.PayPal.com). Create an account if you don't already have one using the Sign Up button. There will be a few extra steps not covered here if you are using PayPal for the first time.



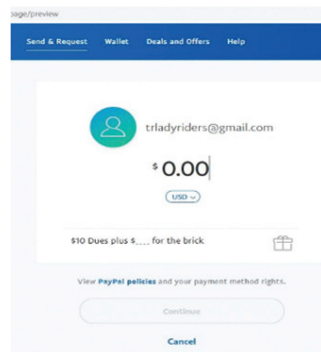
2. Click on the **Send & Request** link at the top of the screen in the blue bar to arrive at the screen on the right.



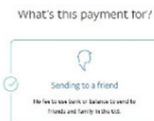
3. Enter **trladyriders@gmail.com** in the box provided and click on the NEXT button.



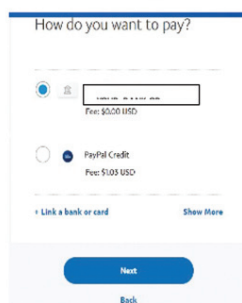
4. Click next to the \$0.00 and enter the amount you wish to pay. Click in the Note space at the bottom and enter the amount for dues, and the optional amount for the Brick Fund if you are donating. Double check the amount then click on the Continue button.



5. Click on the "Sending to a friend" option on the payment purpose screen.

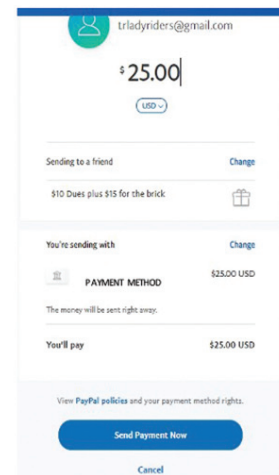


6. Select your payment source on the How do you want to pay screen. You may need to use

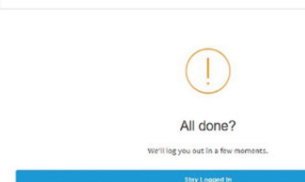
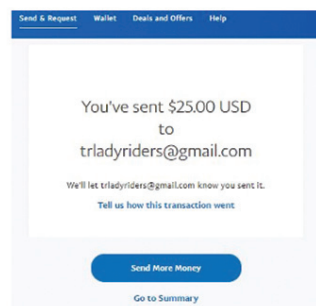


the  
+Link a bank or card to add a bank or credit card. Click next once your payment method is selected.

7. Review the payment details. If everything is ok, click on the Send Payment Now button. If not, use the Change option to correct as needed.



8. The payment confirmation screen shown below on the left appears if all is well. It may flash by quickly but will be visible under the All done? Screen shown below on the right.



9. Log out of PayPal when finished. Thanks for using PayPal and rest assured that we do NOT pay a fee so the Roses get 100% of your contribution.





Twin Rose Lady Riders

## Calendar of Events

In the hope that 2021 will be a better year for rides and gatherings, log in to the winter brunch Zoom meetings with thoughts and ideas — or, if not attending, email them to Nat for discussion!

Dec 13 “2nd Sunday” Zoom Meeting -10:30 AM  
Link to be distributed

Jan 16 Plaque presentation to Red Rose Riders at their party. See Kathy M for details.

**January TRLR Anniversary Party Cancelled.**



**Lynn's “Where Am I?” answer:**  
It's one of the funky sculptures in downtown York.

# RENEGADE CLASSICS

**We Have What You Need**

- \* 1st Quality Premium Leather Jackets, Vests, Chaps, & Gloves,
- \* A Large Selection Of T-Shirts, Jewelry, Helmets, Bags, And So Much More!
- \* Smallest Legal Helmets In Stock!

Roses, show that you're a TRLR member and receive a club discount!

**HOME OF GATORSKINS.**

1721 Whiteford Rd  
York PA 17402  
717-755-7105

[www.renegadeclassicsstore.com](http://www.renegadeclassicsstore.com)

Code TRLR418 Find us on Facebook

## York Motorcycle Club

est. 1940

For more detailed information about the York Motorcycle Club, please visit our website at [www.yorkmotorcycle.com](http://www.yorkmotorcycle.com) or email us at [info@yorkmotorcycle.com](mailto:info@yorkmotorcycle.com).

**Wind Products**

Custom Embroidery and Patches

Your design or one created for you.

[necjcc@ptd.net](mailto:necjcc@ptd.net) 717 432-1074

9:30 a.m. to 11 p.m. Call for Appointment

Nancy Cheris